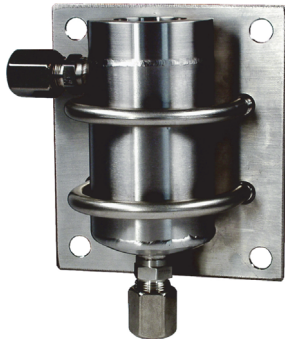
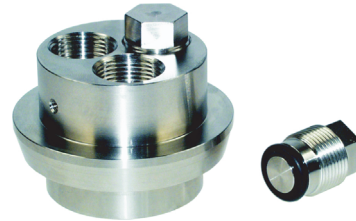


Product Information

Flow-Tank DFG



Accessories



Lid with 3 x PG13.5 process connections and blind gland VS

Characteristics

For continuous analysis measurement with pH-, ORP-cells in liquid media with installation length of max. 120 mm.

Technical data

Material : stainless steel 1.4571
 Process pressure : max. 16 bar
 Operating temperature : max. 140 °C
 Process connection : PG 13.5, G ¼ B or G1A
 Inlet-, outlet : clamping sleeve for pipes 10x2 mm
 Tank diameter : 54 mm

Ordering code

DFG - 1. - 2. - 3.

1. Model	50 measuring tank D=54 mm
2. Process connection	1 x PG13.5 *X = 45 mm 3 x PG13.5 *X = 45 mm 3 x G ¼ B *X = 45 mm 1 x G 1 A *X = 27 mm
3. Options	00 without option
Accessories (stainless steel 1.4571)	MP50 mounting plate incl. Mounting parts RSB50 2 clamp bails incl. Bolt nuts VS PG13,5 blind glands PG13.5

Dimensions

